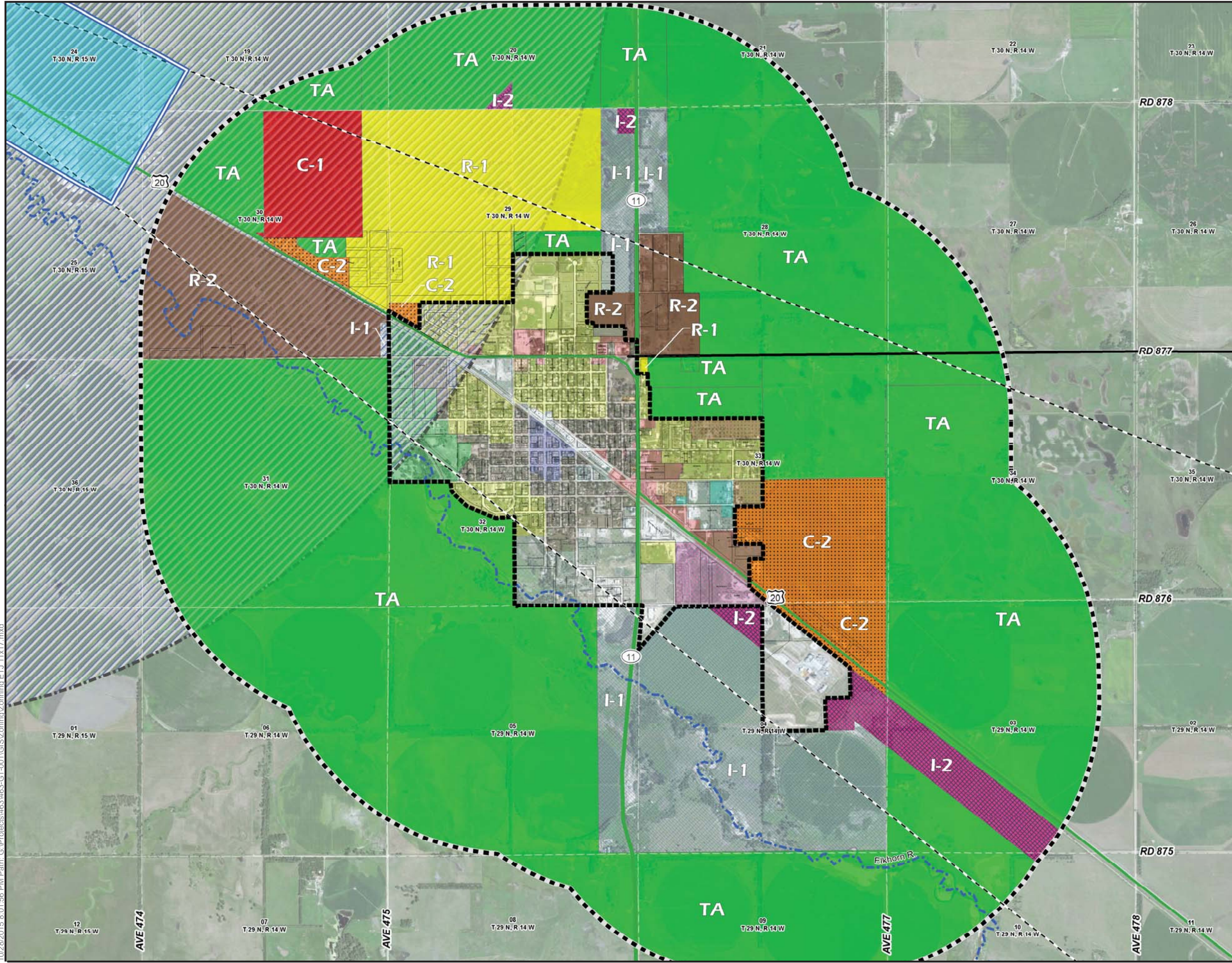
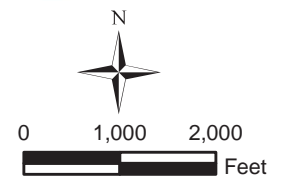


- Legend**
- Atkinson Corporate Limits
 - AH-Overlay District**
 - 10-Mile Approach Zone
 - 3-Mile Turning Zone
 - Zoning Districts**
 - AG - Agricultural District
 - TA - Transitional Agricultural District
 - CN - Conservation and Open Space District
 - R-1 - Single-Family Residential District
 - R-2 - Multiple-Family Residential District
 - MH - Mobile Home Residential District
 - C-1 - Highway Commercial District
 - C-2 - Limited Commercial/Office District
 - C-3 - Town Center District
 - I-1 - Limited Industrial District
 - I-2 - General Industrial District

Note:
 See the Nebraska Department of Aeronautics
 Airport Zoning Map for Cross Section data.

**Corporate Limits
 Zoning Map**
 Atkinson, Nebraska

11/2/2015 3:02:45 PM Path: G:\Projects\463463-G1-001\GIS\Zoning\Zoning Corp 11x17.mxd



Legend

- 1-Mile ETJ
- Atkinson Corporate Limits
- AH-Overlay District**
- 10-Mile Approach Zone
- 3-Mile Turning Zone
- Airport Transition Zone

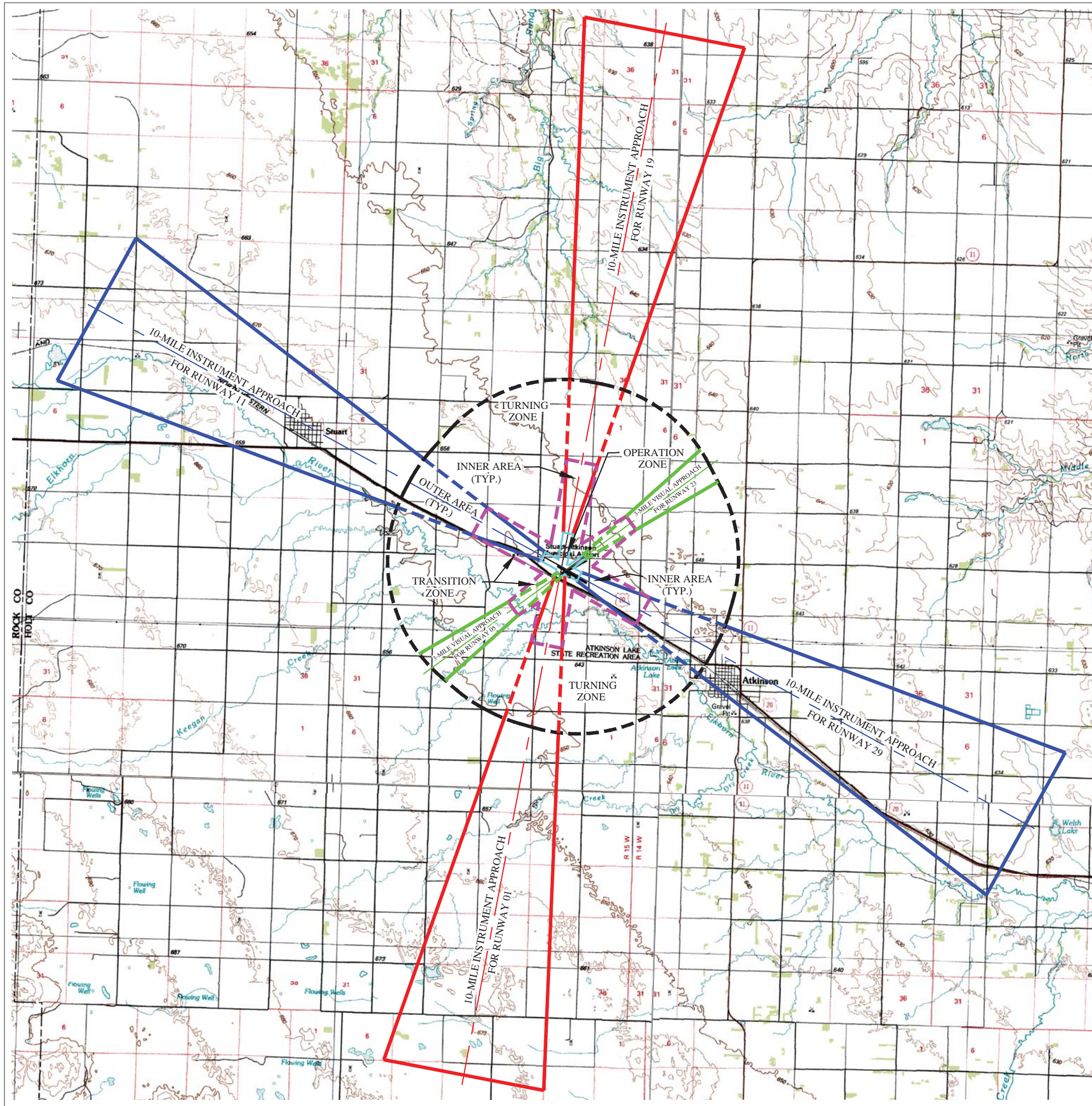
Zoning Districts

- AG - Agricultural District
- TA - Transitional Agricultural District
- CN - Conservation and Open Space District
- R-1 - Single-Family Residential District
- R-2 - Multiple-Family Residential District
- MH - Mobile Home Residential District
- C-1 - Highway Commercial District
- C-2 - Limited Commercial/Office District
- C-3 - Town Center District
- I-1 - Limited Industrial District
- I-2 - General Industrial District

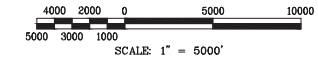
Note:
 See the Nebraska Department of Aeronautics
 Airport Zoning Map for Cross Section data.

ETJ Zoning Map
 Atkinson, Nebraska

10/28/2015 8:01:56 PM Path: C:\Projects\463-01-001\GIS\Zoning\Zoning ETJ 11x17.mxd

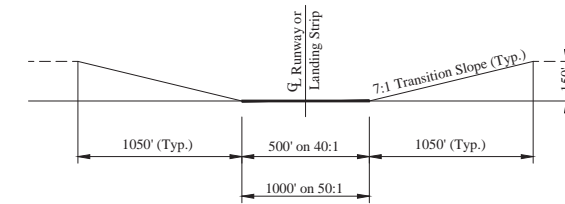


MAGNETIC DECLINATION
6 18' JANUARY 2005
ANNUAL RATE OF CHANGE:
07 23' West Year
SOURCE: USGS MODEL US-2000

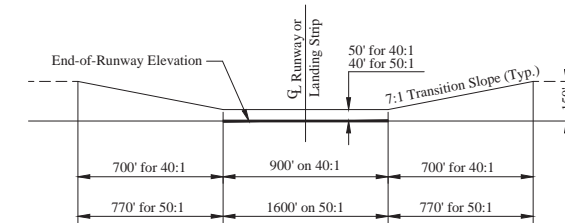


ARP (Airport Reference Point) COORDINATES:
Existing
Latitude = 42° 33' 45.83" Longitude = 99° 02' 19.34"
Ultimate
Latitude = 42° 33' 52.26" Longitude = 99° 02' 24.03"

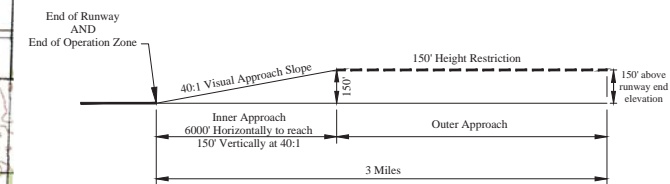
GRADE ELEVATIONS AT RUNWAY ENDS (AMSL)
Runway 01 = 2126.2 ft (u) Runway 19 = 2133.5 ft (u)
Runway 05 = 2122.5 ft Runway 23 = 2128.1 ft
Runway 11 = 2131.2 ft Runway 29 = 2126.1 ft



TYPICAL TRANSVERSE CROSS SECTION ALONG OPERATION ZONE

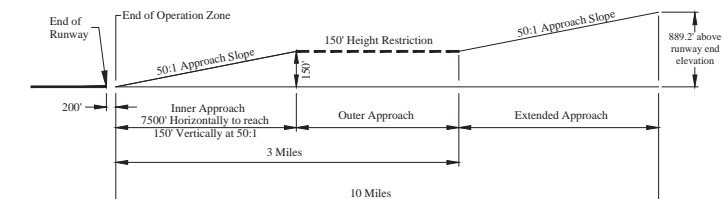


TYPICAL CROSS SECTION OF APPROACH ZONE AT A POINT 2000' FROM END OF OPERATION ZONE.



TURF RUNWAY APPROACH ZONE PROFILE

(for Existing or Proposed Turf Runway)
(Not to scale. Dashed line indicates a Height Restriction of 150' above the runway end elevation)



INSTRUMENT RUNWAY APPROACH ZONE PROFILE

(for Existing or Proposed Instrument Runway)
(Not to scale. Dashed line indicates a Height Restriction of 150' above the runway end elevation)

LEGEND

(dashed lines indicate 150' Height Restriction)

- APPROACH ZONES
 - 11/29 (Blue solid line)
 - (Future Paved) 01/19 (Red solid line)
 - (Existing Turf) 05/23 (Green solid line)
- OPERATION ZONE (Blue solid line)
- TRANSITION ZONE (Blue dashed line)
- 3-MILE ZONE (Black dashed line)

NOTE: In the Turning Zone, any object higher than 150' above the highest point of any existing or proposed runway is considered an obstruction.

AIRPORT ZONING MAP

STUART-ATKINSON
MUNICIPAL AIRPORT
ATKINSON, NEBRASKA

NEBRASKA DEPARTMENT OF AERONAUTICS - DIVISION OF ENGINEERING
P.O. BOX 82088 LINCOLN, NE 68501-2088
OFFICE: (402) 471-2371 FAX: (402) 471-2906

| | |
|--------------------|--------|
| APPROVED: | DATE: |
| REVISIONS: | DESCP. |
| BY: | DATE: |
| DWG. NO. ZN-8V2-15 | |

DRAWN BY: KB
CHECKED BY: DL

SCALE: AS SHOWN
DATE: 04/15/15
SHEET NO. 1/1